

Name(s): _____

Mapping Mockingbirds

Teacher Answer Key

All four species of **Galápagos mockingbirds** are *endemic* to the archipelago, meaning they are native to the islands and found nowhere else in the world. But exactly which islands do they inhabit, and how are they related to one another?

Your task is to map both the *geographic distribution* and the *evolutionary relationships* of the Galápagos mockingbirds. To solve this puzzle, use information from the List of Clues. Listen to instructions for help with color-coding your map and completing the family tree.

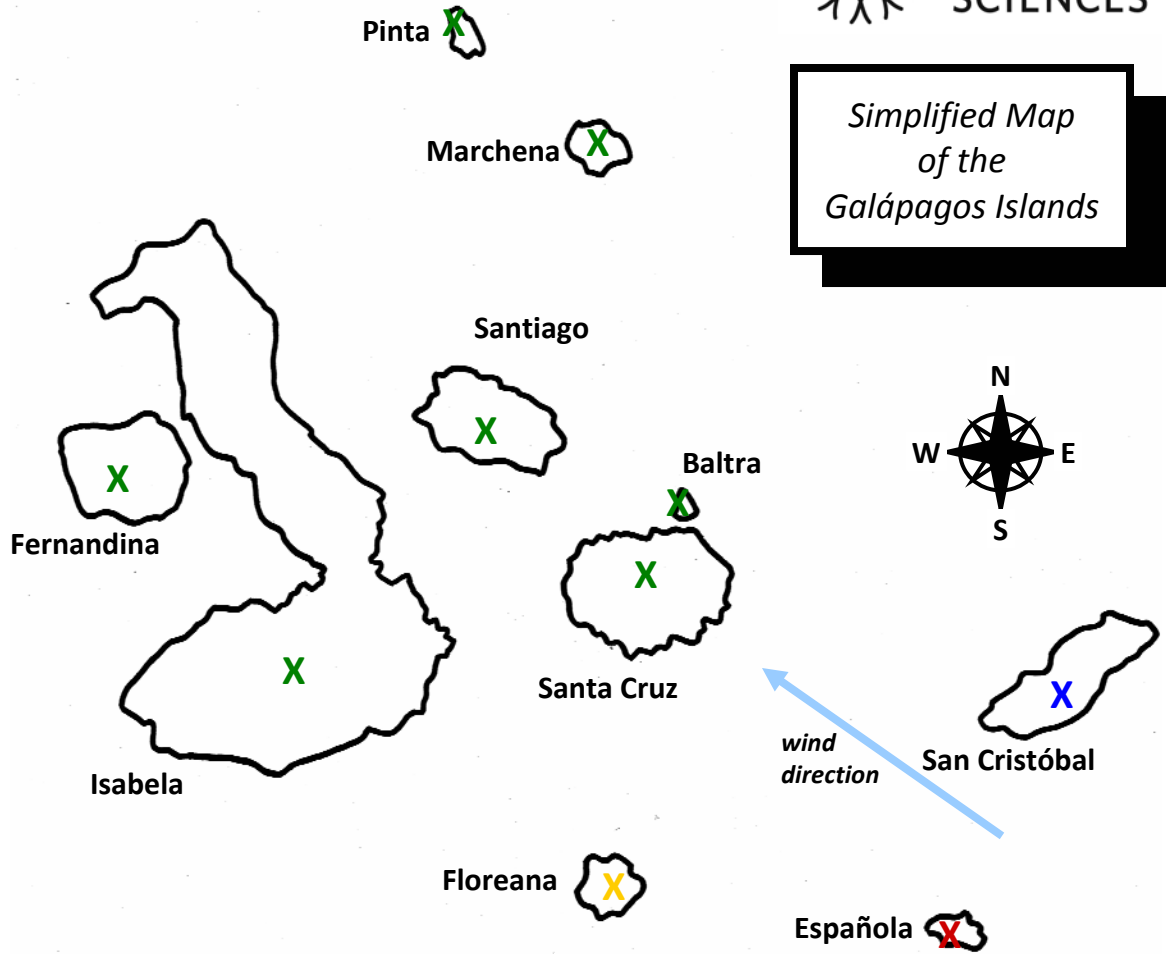




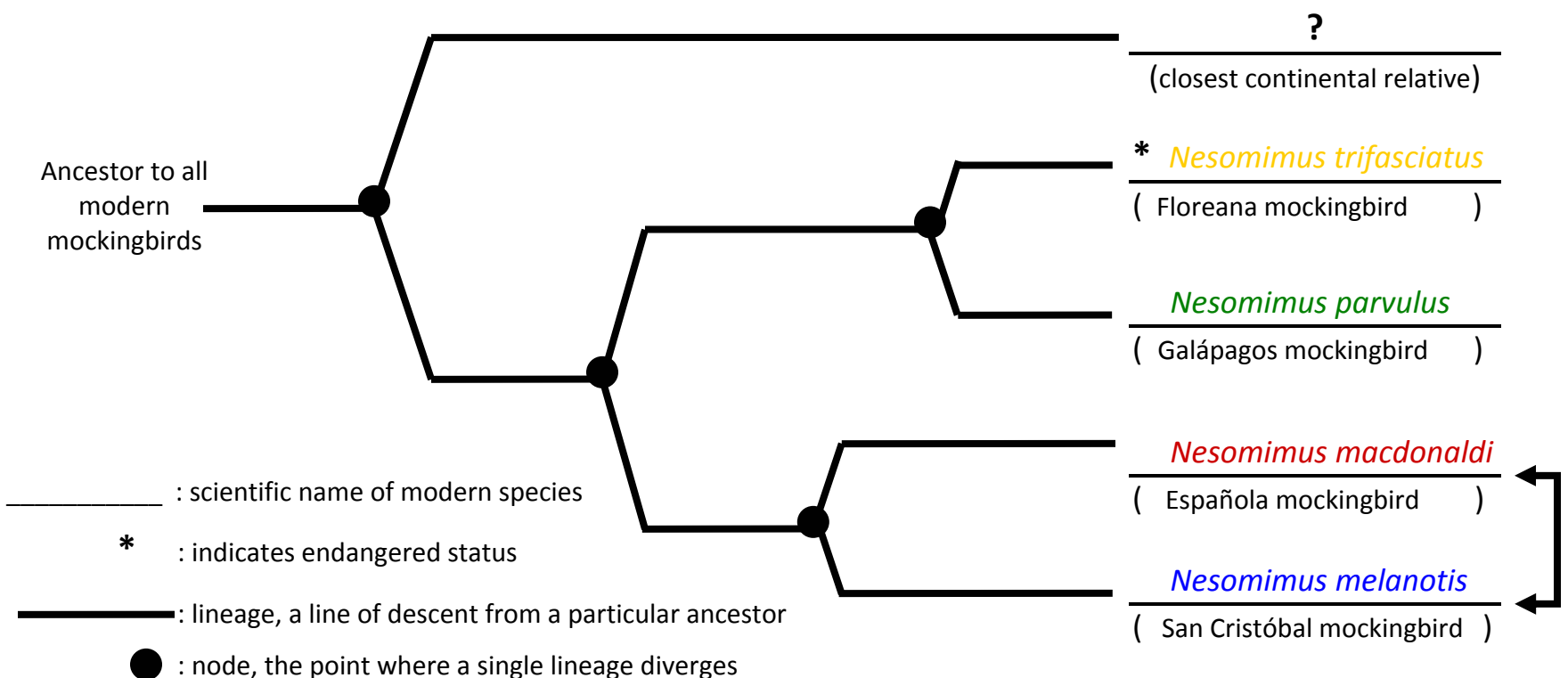


Image Key	Name of Mockingbird Species	Notes
	Scientific: <u><i>Nesomimus macdonaldi</i></u> Common: <u>Española mockingbird</u>	<ul style="list-style-type: none"> • More closely related to bird on San Cristóbal than one on Santa Cruz • Dark throat stripe; spotted breast band • Sister group lives on San Cristóbal
	Scientific: <u><i>Nesomimus trifasciatus</i></u> Common: <u>Floreana mockingbird</u>	<ul style="list-style-type: none"> • Lives on one of the southern islands • Dark head; white patch behind eye • Endangered • Shares a recent common ancestor with <i>N. parvulus</i>
	Scientific: <u><i>Nesomimus parvulus</i></u> Common: <u>Galápagos mockingbird</u>	<ul style="list-style-type: none"> • Shares a recent ancestor with Floreana mockingbird • More closely related to <i>N. trifasciatus</i> than to <i>N. melanotis</i> • Lives on Marchena: does not have a dark throat stripe
	Scientific: <u><i>Nesomimus melanotis</i></u> Common: <u>San Cristóbal mockingbird</u>	<ul style="list-style-type: none"> • Lives on island that is located farthest to the east • Narrow neck collar; black throat stripe • Sister group lives on Española

Family Tree of the Galápagos Mockingbirds

Genus *Nesomimus*



Note: These two answers are interchangeable